

Blue Ant  
Update information 13.1



Dear Users,

The current update of Blue Ant, 13.1 once again provides you with new features and visual enhancements:

- With Blue Ant, you can now simulate the use of resources and budget in your multi-project landscape (page 5).
- In Controlling, risks can be evaluated and recorded across projects (page 8).
- You can now evaluate unsuccessful login attempts that occurred when the pool of concurrent licences was exhausted (page 10).

If you have any questions or suggestions, we would appreciate your feedback via the Blue Ant support page (at [www.blue-ant.de](http://www.blue-ant.de)).

Wishing you success in your project work with Blue Ant,

Your proventis team.

© proventis GmbH 2001-2020

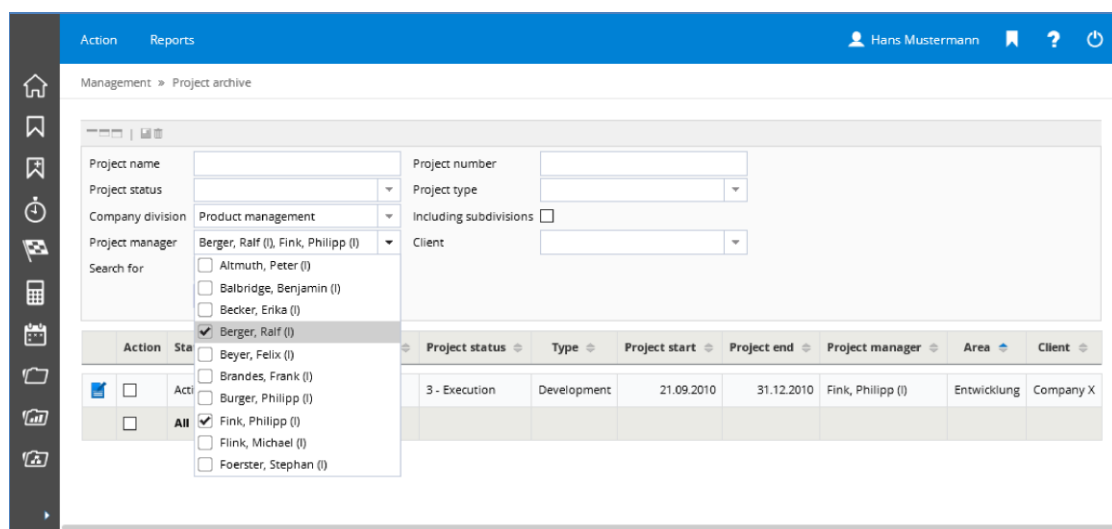
1.	Basic system.....	4
	Filter by projects .....	4
2.	Controlling .....	5
	Portfolio simulation .....	5
	Centralized risk recording .....	8
3.	Administration .....	10
	Display system information .....	10
	Evaluate licence violations.....	10
4.	Interfaces .....	11
	New BIRT datasets .....	11
	Web services.....	11

## 1. Basic system

### Filter by projects

A uniform filter can be applied to project managers. For this purpose, the search field has been converted into a listbox with multiple selection in the following areas:

- PROJECTS
- PORTFOLIO / PROJECTS
- PROGRAM / PROJECTS
- CONTROLLING / PROJECTS / LANDSCAPE
- CONTROLLING / PROJECTS / EVALUATIONS
- CONTROLLING / PROJECTS / PERCENT COMPLETE
- CONTROLLING / PROJECTS / REVENUE EVALUATION
- CONTROLLING / RESERVATION PLANS / PROJECT MANAGER
- CONTROLLING / RESOURCES / COSTS
- MANAGEMENT / PROJECT ARCHIVE



*Filter by project managers using a listbox with multiple selection*

In the following areas, the **Project manager** listbox has been added:

- CONTROLLING / PROJECTS / MILESTONES
- CONTROLLING / PROJECTS / STATUS REPORTS
- CONTROLLING / UTILIZATION / RESERVATION

- MANAGEMENT / BILLING

## 2. Controlling

### Portfolio simulation

With the "Portfolio simulation" module, Blue Ant helps you prioritize projects in your multi-project landscape and portfolio management. Based on the availability and reservations of resources and the budget targets of your projects, you can simulate feasibility with various alternative scenarios. Potential risks in the form of resource bottlenecks can be easily identified in advance and you can make optimizations to ensure realistic implementation.

Under CONTROLLING / PORTFOLIO SIMULATION, you can create various scenarios for the realization of projects in a specific time period. You can create scenarios based on selected projects from your existing project landscape. If required, you can add new project ideas to your scenarios in the form of "ad-hoc projects" and thus create an overall view of current and future project plans.

Space 2020 - "Real Case"

Scenario: Space 2020 - "Real C ..." Company division: Resource: Position:

Simulation

				Project budget	2020								
	Project/Resource	Status	Rank	Target	Jan	Feb	Mar	Apr	May	Jun	Jul	Aug	Sept
				3,000,000.00	1,389	1,252	1,370	1,252	1,197	1,200	1,381	1,257	1,372
					835	713	737	603	505	486	558	148	144
<input type="checkbox"/>	Fresh Fruits		1	200,000.00		3	3	72	73	73	85	76	81
<input type="checkbox"/>	Shuttle 1	Ad-hoc	2	150,000.00	10	20	30	40	50	40	30	20	10
<input type="checkbox"/>	Shuttle 2	Ad-hoc	3	200,000.00		30	40	40	80	80	100	50	50
<input type="checkbox"/>	Gemini Castor		4	219,402.96					15	35	85	76	81
<input type="checkbox"/>	Mercury Redstone	Changed	5	203,731.35				6	7	50	85	74	72
<input type="checkbox"/>	Tiberius Apollon	Changed	6	398,806.02		6	6	19	36	31	33	30	30
<input type="checkbox"/>	Shuttle 3	Ad-hoc	7	400,000.00			50	90	150	180	180	130	100
<input type="checkbox"/>	Shuttle 4	Ad-hoc	8	600,000.00				50	150	300	200	200	200
<input type="checkbox"/>	Shuttle 5	Ad-hoc	9	1,200,000.00		200	200	200	200	200	150	150	150
<input type="checkbox"/>	<b>Total</b>			<b>3,571,940.33</b>	<b>845</b>	<b>972</b>	<b>1,066</b>	<b>1,120</b>	<b>1,266</b>	<b>1,475</b>	<b>1,506</b>	<b>954</b>	<b>918</b>

Project selection & configuration

#### Detailed view of a scenario

In the detailed view of a scenario you get an overview of your selected projects. Colour highlighting illustrates the feasibility or criticality of your projects and simulated adjustments. You can move projects horizontally within the simulation period and lengthen or shorten them. Changing the order of the projects by moving them vertically changes the rank and prioritization of the projects within your scenario. The effects of your adjustments are always immediately visualized by the change in the colour highlighting. You can make adjustments and corresponding visualizations for the entire company and selectively for departments, positions or resources.

A variety of configuration options allows you to flexibly simulate different scenarios. You can specify limits for the key figures Capacity and Budget. The Residual load displays the utilization of resources from all other projects in Blue Ant that are not included in the scenario. The Residual load can be considered a priority (in the header area) or as subordinate (in the footer area). The level of detail of additional information can also be adjusted.

Controlling » Portfolio simulation » Scenario

» Space 2020 - "Real Case"

Scenario: Space 2020 - "...", Company division: [ ], Resource: [ ], Position: [ ]

Simulation

				Project budget							
				2020							
	Project/Resource	Status	Rank	Target	Jan	Feb	Mar	Apr	May	Jun	Jul
				3,000,000.00	1,389	1,252	1,370	1,252	1,197	1,200	1,381
					835	713	737	603	505	486	558
<input type="checkbox"/>	Fresh Fruits		1	200,000.00		3	3	72	73	73	85
<input type="checkbox"/>	Shuttle 1	Ad-hoc	2	150,000.00	10	20	30	40	50	40	30
<input type="checkbox"/>	Shuttle 2	Ad-hoc	3	200,000.00		30	40	40	80	80	100
<input type="checkbox"/>	Gemini Castor		4	219,402.96					15	35	85
<input type="checkbox"/>	Mercury Redstone	Changed	5	203,731.35				6	7	50	85
<input type="checkbox"/>	Tiberius Apollon	Changed	6	398,806.02		6	6	19	36	31	33
<input type="checkbox"/>	Shuttle 3	Ad-hoc	7	400,000.00			50	90	150	180	180
<input type="checkbox"/>	Shuttle 4	Ad-hoc	8	600,000.00				50	150	300	200
<input type="checkbox"/>	Shuttle 5	Ad-hoc	9	1,200,000.00		200	200	200	200	200	150
<input type="checkbox"/>	<b>Total</b>			<b>3,571,940.33</b>	<b>845</b>	<b>972</b>	<b>1,066</b>	<b>1,120</b>	<b>1,266</b>	<b>1,475</b>	<b>1,506</b>

Project selection & Configuration

Residual load display: Header Footer Hide

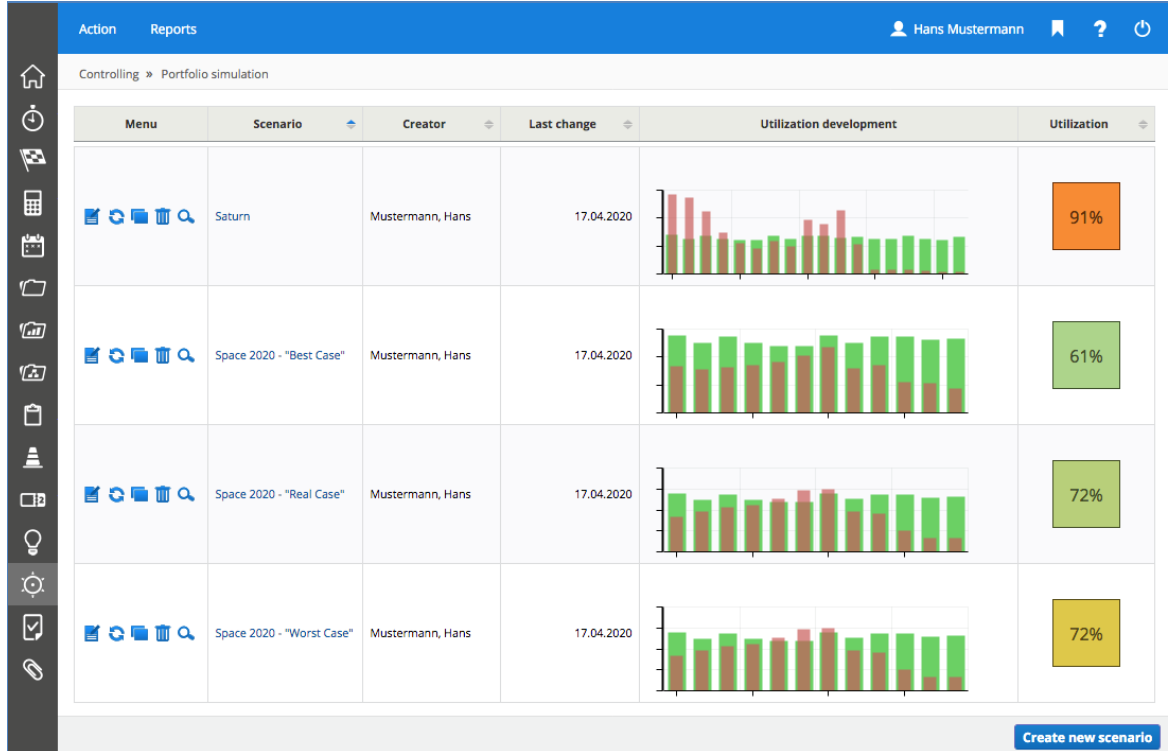
Tooltip display: Detailed Compact Off

Show deltas in footer  
 Show reservations  
 Show resource conflicts  
 Highlight existing actual worktimes  
 Capacity limit

Budget limit (Euro): 3,000,000

Configuration of a scenario

If you want to see the values of another scenario in the detailed view, you can select the required scenario in the filter or compare the utilization development and the average percentage utilization of your scenarios on the overview page.



Menu	Scenario	Creator	Last change	Utilization development	Utilization
	Saturn	Mustermann, Hans	17.04.2020		91%
	Space 2020 - "Best Case"	Mustermann, Hans	17.04.2020		61%
	Space 2020 - "Real Case"	Mustermann, Hans	17.04.2020		72%
	Space 2020 - "Worst Case"	Mustermann, Hans	17.04.2020		72%

[Create new scenario](#)

#### Overview of the scenarios of the portfolio simulation

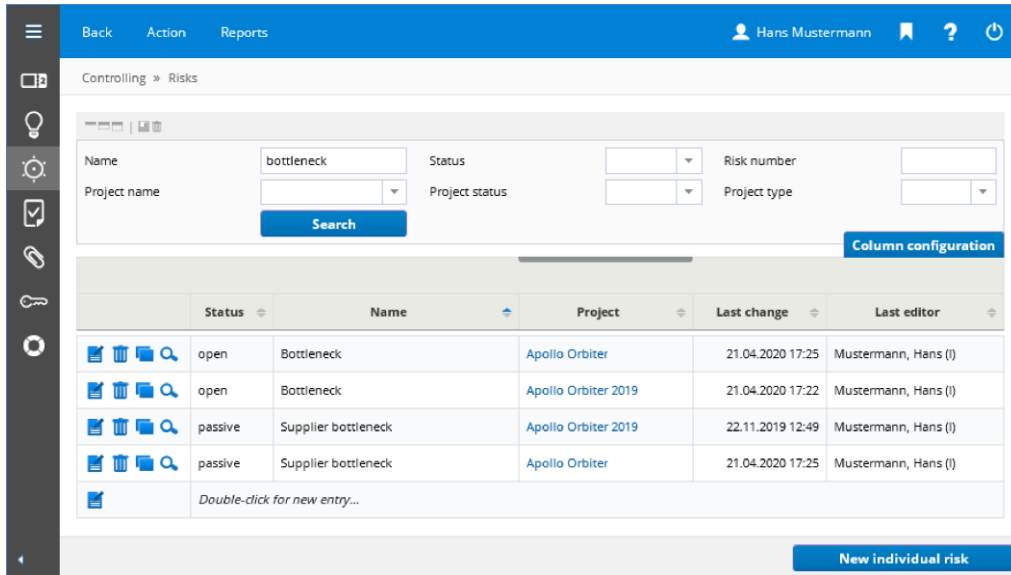
Users of program and portfolio management in Blue Ant can also use the new simulation module directly under PROGRAM / SIMULATION or PORTFOLIO / SIMULATION.

 **If you would like to use the portfolio simulation, please contact our sales department by phone or email.**

**After purchasing a licence for the "Portfolio simulation" module, please set up write access for CONTROLLING / PORTFOLIO SIMULATION for the required user groups. If the new module is to be used together with the program and portfolio management, the desired user groups need write access for the PROGRAM / SIMULATION and PORTFOLIO / SIMULATION screens.**

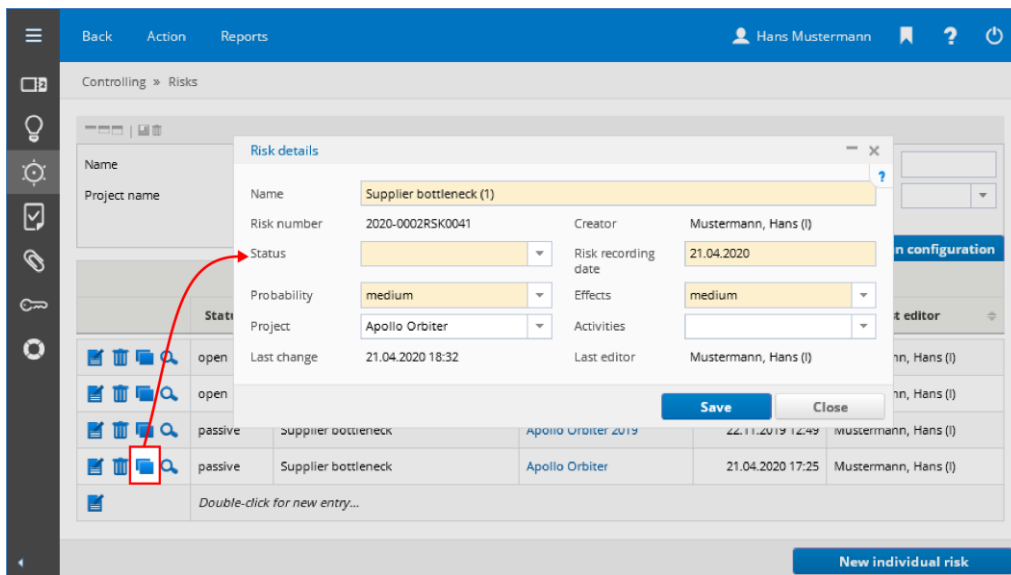
## Centralized risk recording

Under CONTROLLING / RISKS, risks are now displayed across projects.



*Cross-project display of risks in Controlling*

The screen can be used to record risks centrally for projects. This includes all projects assigned to your access-to company division. Selecting a project is not mandatory for assessing risks. This makes it possible to also record risks as a template. If you want to assign such a risk to a project later, you can copy the risk. Blue Ant then opens a window in which you can edit the new risk.

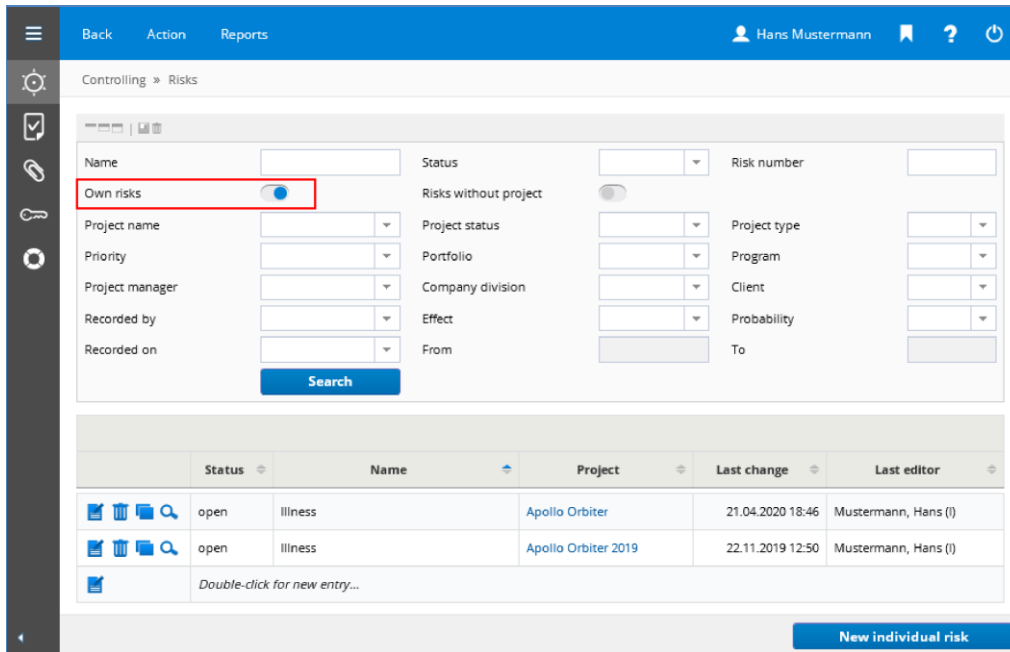


*Copy and edit risk*



The risk selection can be limited to Own risks. This includes:

- Risks you have recorded yourself (whether in Controlling or in Projects)
- Risks associated with projects in which you are project manager or deputy.
- Risks belonging to portfolios or programs to which you are assigned as the person responsible.



Controlling » Risks

Back Action Reports Hans Mustermann

Name  Status  Risk number

**Own risks**  Risks without project

Project name  Project status  Project type

Priority  Portfolio  Program

Project manager  Company division  Client

Recorded by  Effect  Probability

Recorded on  From  To

Search

Status	Name	Project	Last change	Last editor
open	Illness	Apollo Orbiter	21.04.2020 18:46	Mustermann, Hans (I)
open	Illness	Apollo Orbiter 2019	22.11.2019 12:50	Mustermann, Hans (I)
Double-click for new entry...				

New individual risk

#### Filter by own risks

Under ADMINISTRATION / CUSTOMIZING / GENERAL / DEFAULT-SPEC. on the **Controlling** tab administrators can specify whether these filter settings should initially be activated. Using the rights system, you can also define that specific user groups generally only see their own risks. To do this, set the "Own risks" entry to "Read".

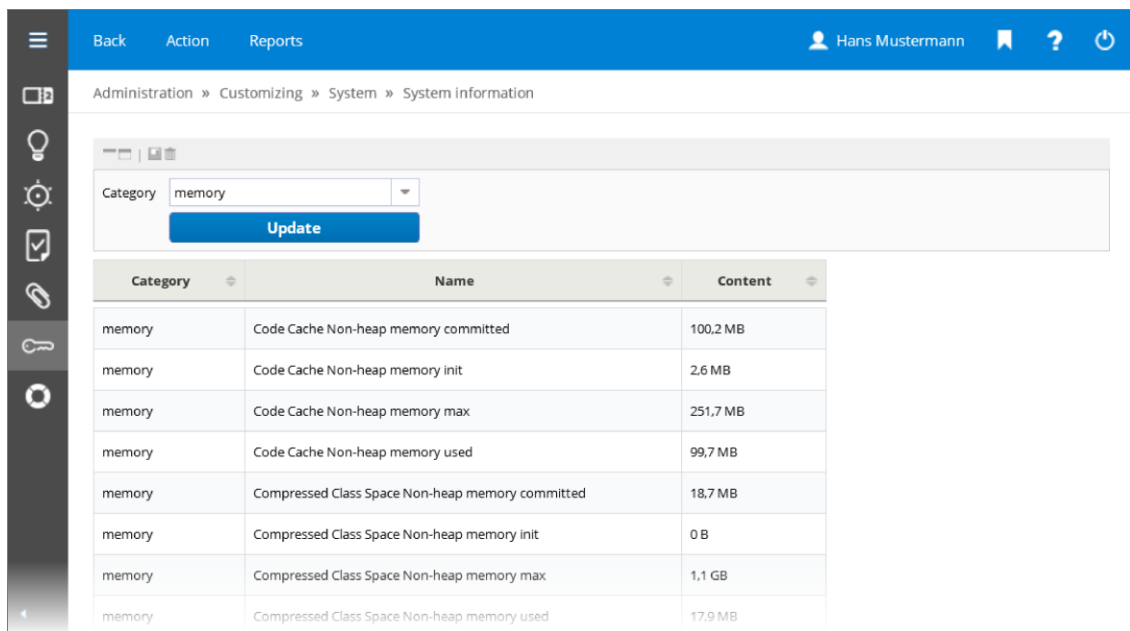
As the circle of people who can process project risks has expanded with the update, new email notifications have also been integrated. Project managers now receive an email if staff have added risks to or removed risks from their project.

- 💡 **In order to use the new area, the administrator must give the users write permission for CONTROLLING / RISKS.**

### 3. Administration

#### Display system information

With system information administrators get an overview of the configuration and status of the Blue Ant server. For example, system information shows versions of installed components and important parameters. System information also provides important information for support cases. Administrators can view system information under ADMINISTRATION / CUSTOMIZING / SYSTEM / SYSTEM INFORMATION.



The screenshot shows the Blue Ant administration interface. The top navigation bar includes 'Back', 'Action', and 'Reports'. The user 'Hans Mustermann' is logged in. The breadcrumb trail is 'Administration » Customizing » System » System information'. Below the breadcrumb, there is a 'Category' dropdown menu set to 'memory' and an 'Update' button. A table displays the system information for memory.

Category	Name	Content
memory	Code Cache Non-heap memory committed	100.2 MB
memory	Code Cache Non-heap memory init	2.6 MB
memory	Code Cache Non-heap memory max	251.7 MB
memory	Code Cache Non-heap memory used	99.7 MB
memory	Compressed Class Space Non-heap memory committed	18.7 MB
memory	Compressed Class Space Non-heap memory init	0 B
memory	Compressed Class Space Non-heap memory max	1,1 GB
memory	Compressed Class Space Non-heap memory used	17.9 MB

#### System information

Using the system key **Systeminformation.appendSysInfoToSupportRequests** you can configure Blue Ant so that a system information report is automatically attached to support questions. This key is not active as standard.

#### Evaluate licence violations

If you use Blue Ant with concurrent licences, you can now evaluate how many logins were unsuccessful because the licence pool was used up. For this purpose, we have created the "Licence violations" report, which you can access under ADMINISTRATION / MONITORING or ADMINISTRATION / CUSTOMIZING / SYSTEM / MISCELLANEOUS in the toolbar under Reports. It is also possible for Blue Ant to send you the report automatically at specific times by email. Under ADMINISTRATION / CUSTOMIZING / TEMPLATES / REPORTS you can create a configuration for automatic sending of the report.

## 4. Interfaces

### New BIRT datasets

New datasets are available for BIRT reports:

- "staff\_cost\_history": Shows the history of the cost rates of resources
- "worktimes\_finished\_raw": Shows the completion report of calendar weeks

### Web services

The current WSDL files and the HTML documentation can be found in the "webservice" update folder.